

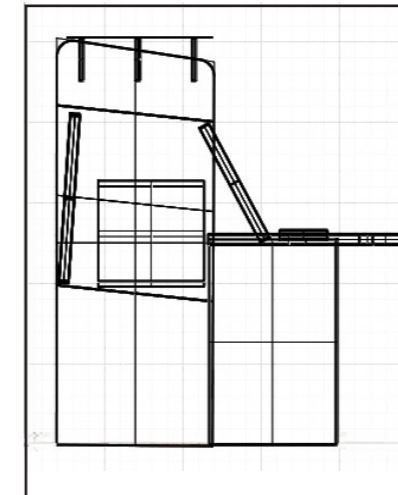
TIMELESS



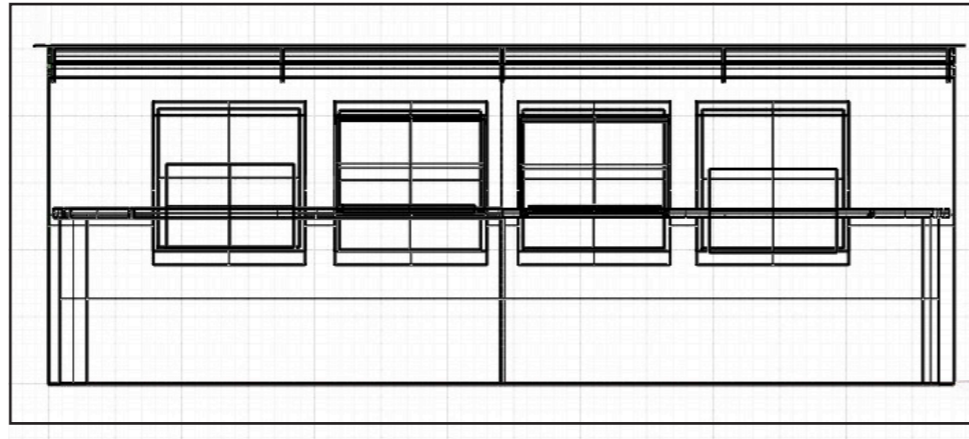
The Timeless deck bring aspects from concepts laid down during the art nouveau scene that was so popular in and around the 1920's, and immerses them into the values and issues of the 21st century.



The whole ethos of the piece aims to create an amalgamation of smooth surfaces, rough edges and good looks as well as incorporating high technologies in order to increase productivity and maximize usage by all.



The interior of the piece houses all the hardware requirements lined out in the brief with the inclusion of four touch screen monitors placed along the front or public side of the desk. These ensure that wheelchair occupants as well as less able individuals can find all the support and information they require with only a gesture.



The desk itself is made from chipboard otherwise known as particleboard; this unusual material is low cost and can be highly sustainable when manufactured correctly.

Rather than covering the wood in a vinyl finish the desk is coated by a transparent natural resin that accentuates the texture of the wood whilst protecting it from wear and tear. The motivation behind treating the wood in this way is to make it unusual enough to stand out from its surroundings attracting newcomers to the reception, however remaining modest enough to ensure that it does not detract from the newly refurbished interiors.